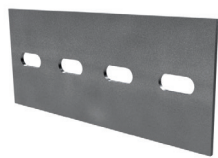




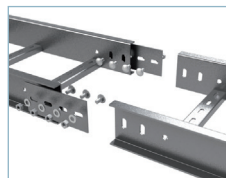
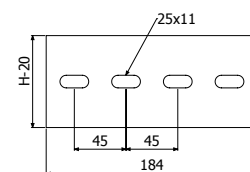
JURP



JURP 70
JURP 100/120

			GC80	
H		e	REF.	kg/ud
mm	inch	mm		
70	2 3/4"	3	2/5113	0,21
100	4"	3	2/3607	0,35

4/100 x CT3 (2/7133-i304)



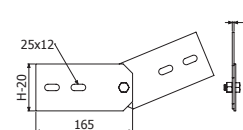
JURP-A



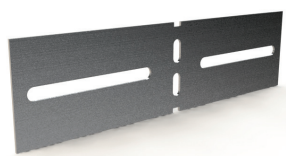
JURP-A 70
JURP-A 100/120

			GC80	
H		e	REF.	kg/ud
mm	inch	mm		
70	2 3/4"	3	2/12100	0,36
100	4"	3	2/5523	0,60

4/100 x CT3 (2/7133-i304)



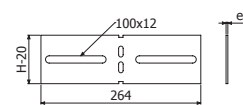
JURP-B



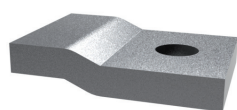
JURP-B 70
JURP-B 100/120

			GC80	
H		e	REF.	kg/ud
mm	inch	mm		
70	2 3/4"	3	2/5854	0,26
100	4"	3	2/5855	0,45

4/100 x CT3 (2/7133-i304)



BRP



BRP

GC80	
REF.	kg/ud
2/5624	0,17

SP/SPD --> DIN933 M10X30 (2/17547 - i304) + TM41 M10 (2/17584 - GC)

